
INTRODUCTION

SoundSet is an application that automatically controls your sound card's volume when certain events occur. The program will turn the volume up when your computer is idle (so you can hear email notifications from another room), and turn the volume down to a normal level when you are using the computer again. The program can also make sure the volume is low during certain times of the day or night regardless of you computer being idle or not.

Program Features:

- Turn your sound volume up when your computer is idle
- Turn volume back down to a normal level when you are using your computer
- Turn volume down during a specified time period
- Play sound files when switching to or from idle period
- Runs as an icon in your system tray
- Hear when email when it arrives when you are in another room
- Never again miss the end of a file transfer if you walk out of earshot of your computer
- Prevent being "blasted" by your speakers for forgetting to turn down your sound volume
- Avoid waking up the spouse when using your computer late at night and forgetting the volume was set on high

WELCOME

Sound Set v1.00
Help File



[Dialog Box Help](#)

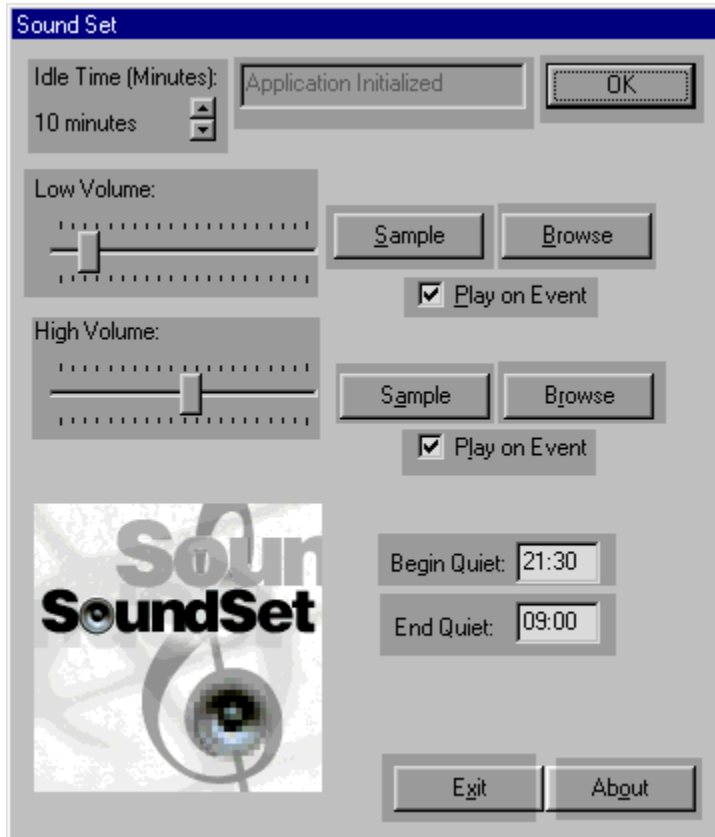
[Features](#)

[Disclaimer](#)

[Shareware Registration](#)

MAIN DIALOG BOX

Click one of the dark gray areas for more information:



IDLE

Use this control to set the amount of time your computer needs to be idle (no mouse movement or keyboard input) before changing to the [High Volume](#) . Click on the up or down arrows to increase or decrease time respectively.

LOW VOLUME SETTING

Move this slider to increase or decrease the sound level/volume for when the computer is in Active (non-idle) mode. Click the sample button to test the sound level.

HIGH VOLUME SETTING

Move this slider to increase or decrease the sound level/volume for when the computer is in Idle mode. Click the sample button to test the sound level.

SAMPLE SOUND BUTTON

Click on this button to hear the chosen sound at the appropriate volume.

BROWSE SOUND BUTTON

Click this button to view or select a new sound for the appropriate event.

PLAY ON EVENT CHECK BOX

Enable this checkbox to hear the event sound the the idle or active event occurs.

BEGIN OR END QUIET INTERVAL

The “Begin Quiet” and “End Quiet” fields allow you to specify a time range when the computer volume should always be set at the low volume regardless of if the computer is idle or not. The time should be specified in a 24 hour format.

STATUS BAR HELP

This field shows the most recent status of the SoundSet application. It will indicate when the program enters into idle or active mode, or when the program begins or ends the quiet time period.

EXIT BUTTON

Click this button to exit the program. The sound volume will be left at the “Low” level.

OK BUTTON

Click on this button to accept the current settings and minimize the application. The application will be minimized to the system tray. Double click on the icon in the system tray to restore the application.

ABOUT BUTTON

Click this button to display information and registration details for the application. You can also enter registration information through this dialog.

LEGAL

COPYRIGHT. SoundSet © 1998 by Encom Incorporated.

All Rights Reserved.

OWNERSHIP. The Software is a product owned, developed, and copyrighted by ENCOM INCORPORATED. Ownership of, and title to, the Software and all copies thereof shall be held by ENCOM INCORPORATED.

PROTECTION OF SOFTWARE. Except as expressly authorized in this Agreement, Licensee may not: (i) disassemble, decompile or otherwise reverse engineer the Software, or (ii) create derivative works based upon the Software, or (iii) rent, lease, sublicense, distribute, transfer, copy, reproduce, modify or timeshare the Software, or (iv) modify the Software (including any deletion of code from or addition of code to the Software).

DISCLAIMER OF WARRANTY. The Software is provided on an AS IS basis, without warranty of any kind, including without limitation the warranties of merchantability, fitness for a particular purpose and non-infringement. The entire risk as to the quality and performance of the Software is borne by you. Should the Software prove defective, you and not Encom Incorporated assume the entire cost of any service and repair. This disclaimer of warranty constitutes an essential part of the agreement. SOME STATES DO NOT ALLOW EXCLUSIONS OF AN IMPLIED WARRANTY, SO THIS DISCLAIMER MAY NOT APPLY TO YOU AND YOU MAY HAVE OTHER LEGAL RIGHTS THAT VARY FROM STATE TO STATE OR BY JURISDICTION.

LIMITATION OF LIABILITY. UNDER NO CIRCUMSTANCES AND UNDER NO LEGAL THEORY, TORT, CONTRACT, OR OTHERWISE, SHALL ENCOM INCORPORATED OR ITS SUPPLIERS OR RESELLERS BE LIABLE TO YOU OR ANY OTHER PERSON FOR ANY INDIRECT, SPECIAL, INCIDENTAL, OR CONSEQUENTIAL DAMAGES OF ANY CHARACTER INCLUDING, WITHOUT LIMITATION, DAMAGES FOR LOSS OF GOODWILL, WORK STOPPAGE, COMPUTER FAILURE OR MALFUNCTION, OR ANY AND ALL OTHER COMMERCIAL DAMAGES OR LOSSES. IN NO EVENT WILL ENCOM INCORPORATED BE LIABLE FOR ANY DAMAGES IN EXCESS OF INFOFERRET'S LIST PRICE FOR A LICENSE TO THE SOFTWARE, EVEN IF ENCOM INCORPORATED SHALL HAVE BEEN INFORMED OF THE POSSIBILITY OF SUCH DAMAGES, OR FOR ANY CLAIM BY ANY OTHER PARTY. THIS LIMITATION OF LIABILITY SHALL NOT APPLY TO LIABILITY FOR DEATH OR PERSONAL INJURY TO THE EXTENT APPLICABLE LAW PROHIBITS SUCH LIMITATION. FURTHERMORE, SOME STATES DO NOT ALLOW THE EXCLUSION OR LIMITATION OF INCIDENTAL OR CONSEQUENTIAL DAMAGES, SO THIS LIMITATION AND EXCLUSION MAY NOT APPLY TO YOU.

GOVERNING LAW. This agreement shall be governed by the laws of the State of Missouri and the United States of America.

DISTRIBUTION. Provided that you verify that you are distributing the Shareware Version you are hereby licensed to make as many copies of the Shareware version of this software and documentation as you wish; give exact copies of the original Shareware version to anyone; and distribute the Shareware version of the software and documentation in its unmodified form via electronic means. There is no charge for any of the above.

You are specifically prohibited from charging, or requesting donations, for any such copies, however made; and from distributing the software and/or documentation with other products (commercial or otherwise) without prior written permission.

SHAREWARE REGISTRATION

If you find this software useful and/or wish to continue using it beyond the original 30 day trial, you must register it.

Registration is \$21.95. You will be send a registration code which will stop the initial registration screen from popping up when you start the program.

See ORDERS.TXT for more information.

